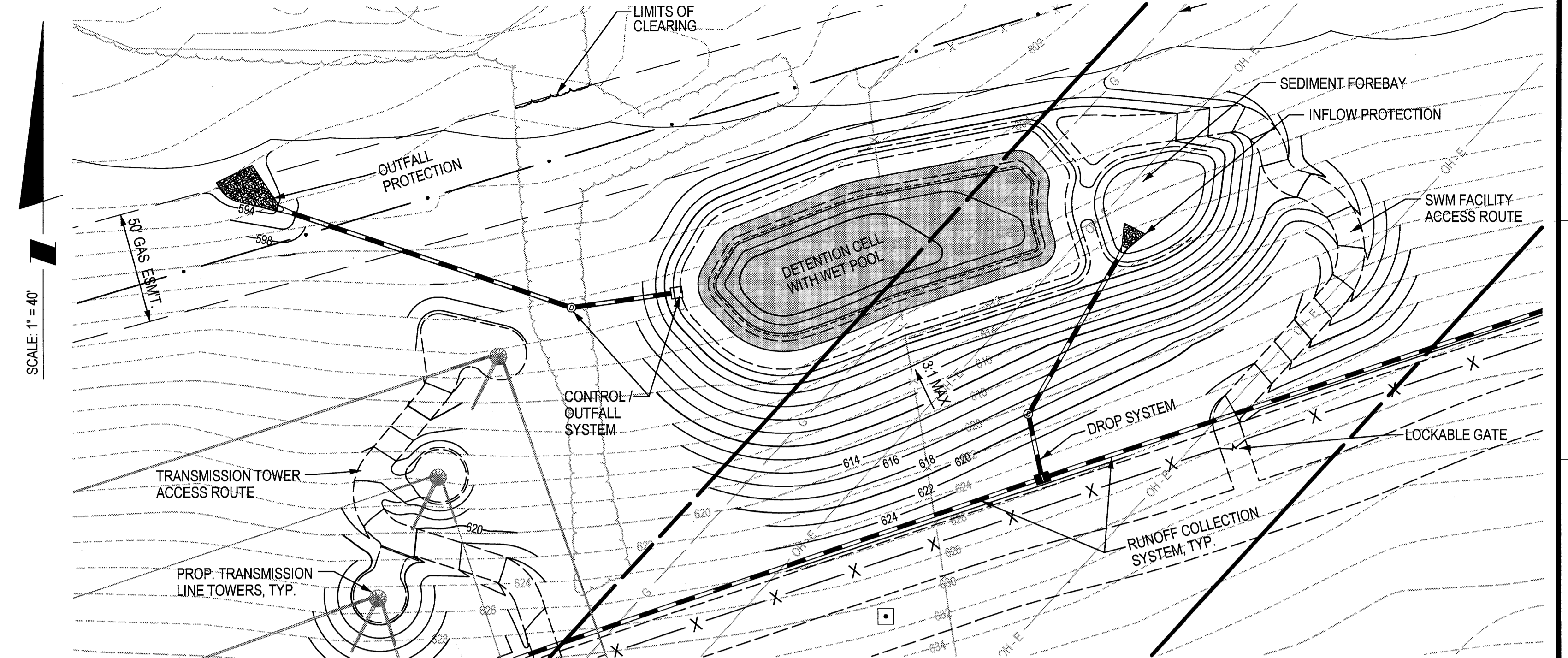
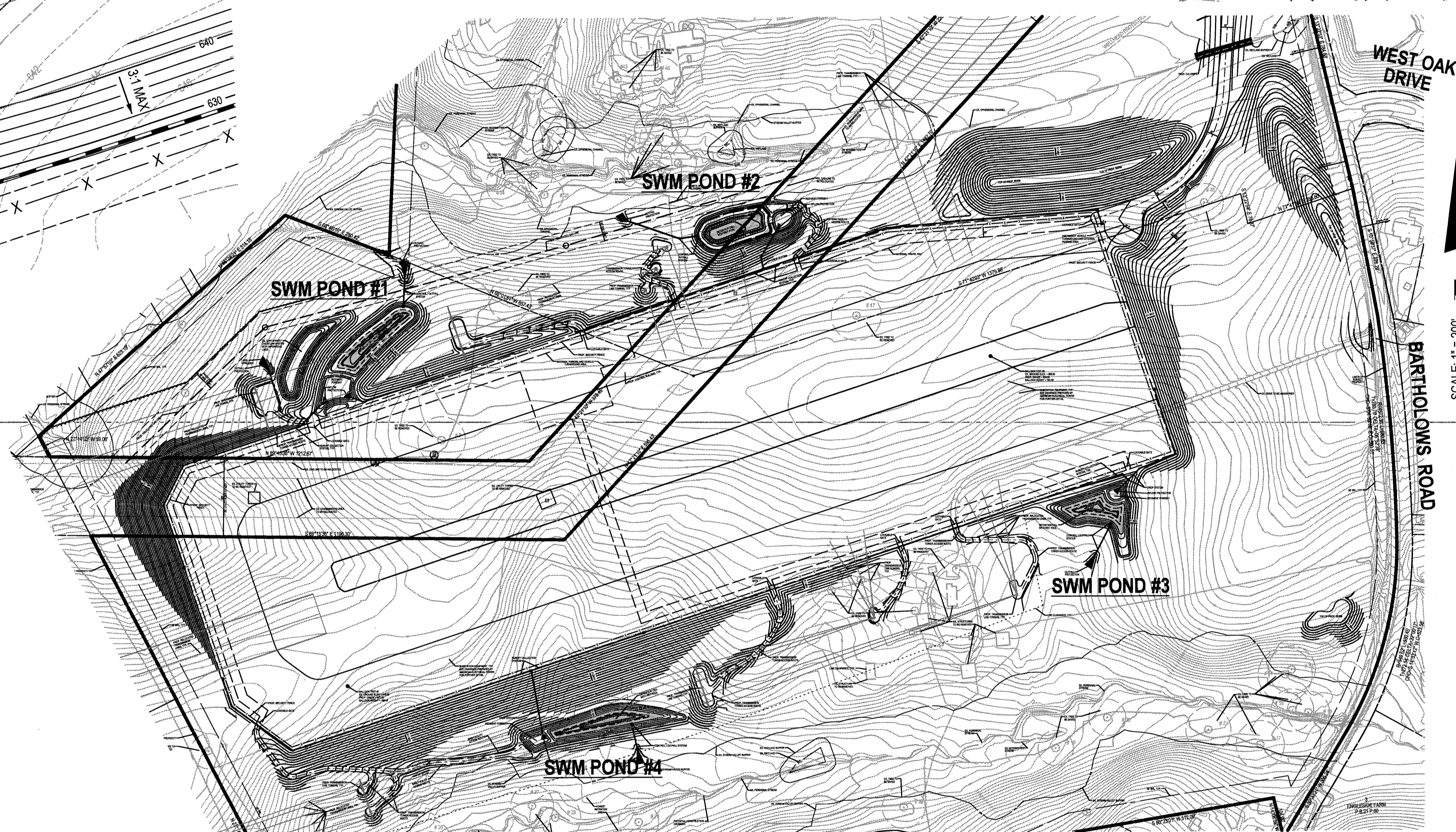


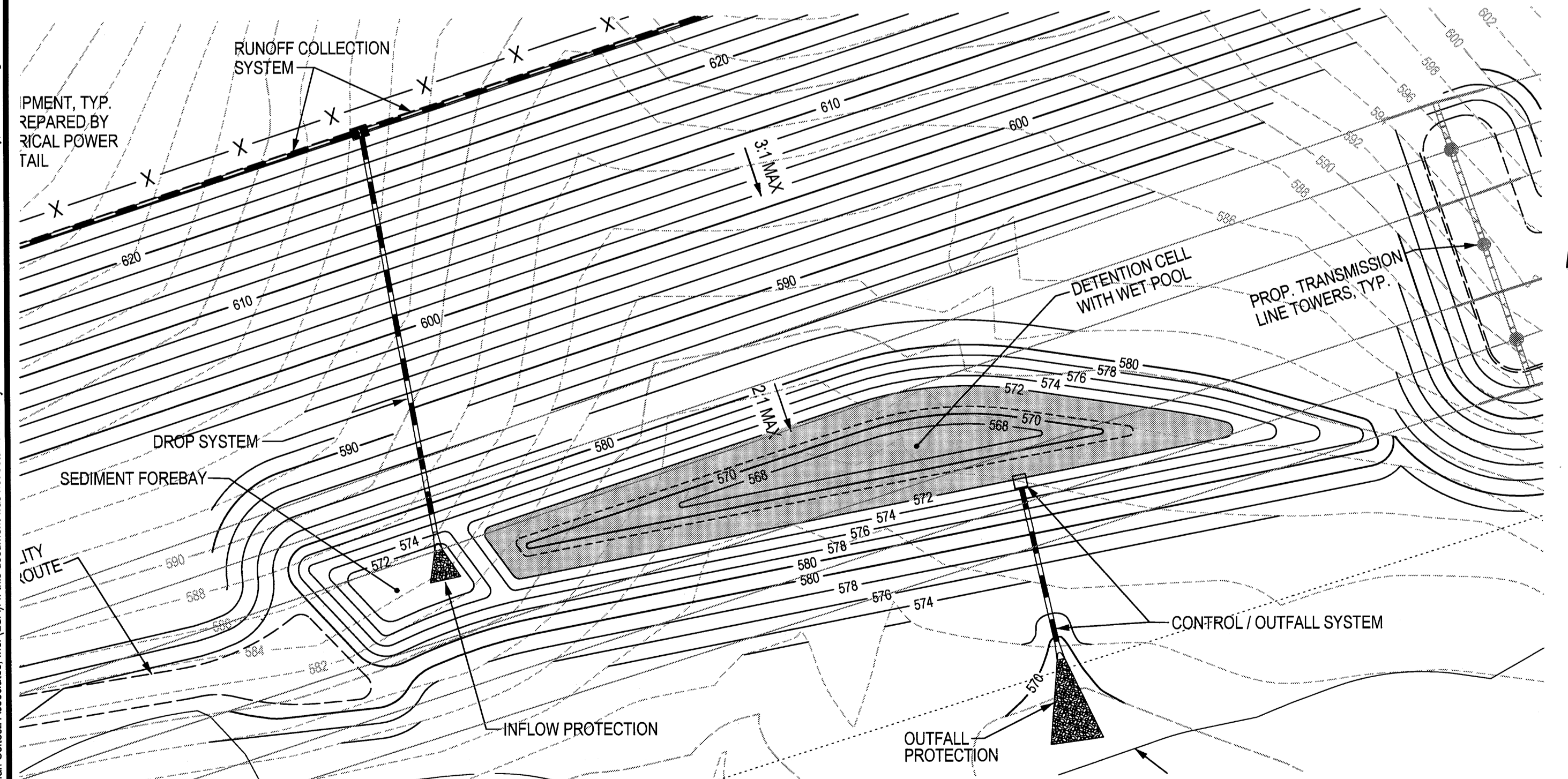
**SWM POND #1**  
SCALE: 1"=40'



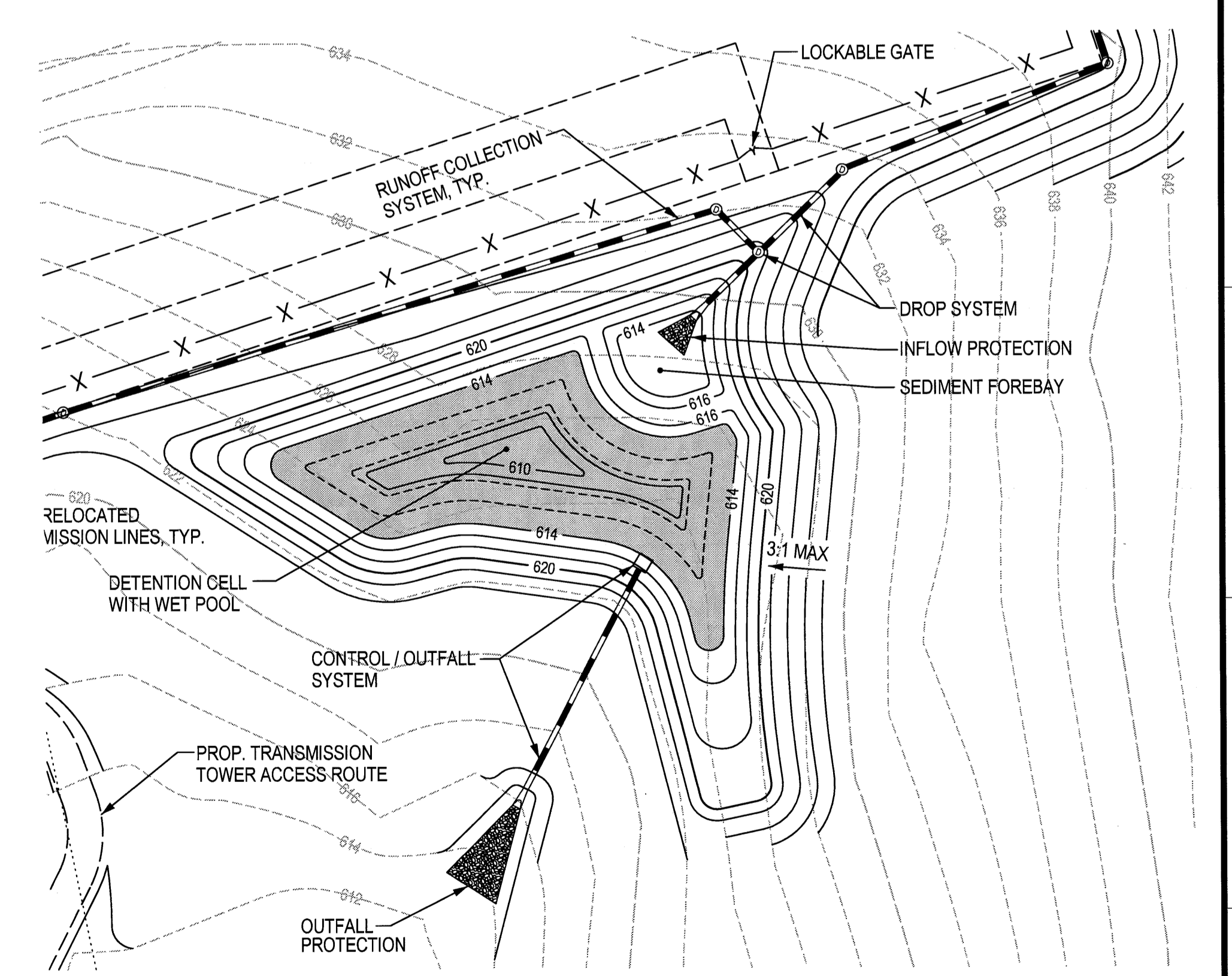
**SWM POND #2**  
SCALE: 1"=40'



**SWM POND ORIENTATION PLAN**  
SCALE: 1"=200'



**SWM POND #4**  
SCALE: 1"=40'



**SWM POND #3**  
SCALE: 1"=40'

- NOTES:**
1. ALL SWM FACILITIES DESIGNED PER MDE 2009 / 2000 SWM DESIGN MANUAL.
  2. ALL FACILITIES ARE DESIGNED AS MICRO-POOL EXTENDED DETENTION PONDS.
  3. FACILITIES ARE CONCEPTUAL IN NATURE AND ARE SUBJECT TO CHANGE AND / OR ELIMINATION FOLLOWING FURTHER GEOTECHNICAL STUDIES AND CONFIRMATION OF FINAL INFILTRATION RATES.
  4. SHADING INDICATES LIMIT OF PERMANENT POOL WITHIN EACH FACILITY.

**LS** Loiderman Soltesz Associates, Inc.  
Rockville Office  
2 Research Place, Suite 100  
Rockville, MD 20850  
t. 301.948.2750 f. 301.948.9067  
www.LSAssociates.net

NO.	DATE	DESIGNED	REVISIONS	TECHNICIAN	BY	DATE	CHECKED
1	AUGUST 2010	G.P.	VS - 2010	G.M.M.			K.C.R.

**MISS UTILITY NOTE**  
INFORMATION CONCERNING EXISTING UNDERGROUND UTILITIES WAS OBTAINED FROM AVAILABLE RECORDS. THE CONTRACTOR MUST DETERMINE THE EXACT LOCATION AND ELEVATION OF ALL EXISTING UTILITIES AND UTILITY CROSSINGS BY DIGGING TEST PITS BY HAND, WELL IN ADVANCE OF THE START OF EXCAVATION. CONTACT MISS UTILITY AT 1-800-327-7777 48 HOURS PRIOR TO THE START OF EXCAVATION. IF CLEARANCES ARE LESS THAN SHOWN ON THIS PLAN OR THREE (3) INCHES, WHOEVER IS LESS, CONTACT THE ENGINEER AND THE UTILITY COMPANY BEFORE PROCEEDING WITH CONSTRUCTION. CLEARANCES LESS THAN NOTED MAY REQUIRE REVISIONS TO THIS PLAN.

**PREPARED FOR:**  
KENNY CONSTRUCTION COMPANY  
1218 CONAMAR DRIVE  
SUITE #204 / SUITE # 205  
HAGERSTOWN, MARYLAND 21742  
PHONE: 301-745-9985  
FAX: 301-745-3636  
ATTN: MR. ROBERT DAHLIN

COPYRIGHT ADD THE MAP PEOPLE PERMITTED USE NUMBER 2007119	
MAP # 4999	GRID - 03, 04, 03, 04
TAX MAP # 89	ZONING CATEGORY 'A'
WSSC 200' SHEET	
SITE DATUM	
HORIZONTAL: NAD 83	
VERTICAL: NAD 88	

**STORMWATER MANAGEMENT ORIENTATION PLAN**

**KEMPTOWN SUBSTATION**

SITUATED AT THE INTERSECTION OF BARTHOLOWS ROAD AND WEST OAK DRIVE  
NEW MARKET ELECTION DISTRICT No. 9  
FREDERICK COUNTY, MARYLAND

SHEET 9 OF 23	PROJECT NO. 1614-00-00
---------------	------------------------

P:\116140000\PREL\Special Exception Plan Sheets\09-STORMWATER MANAGEMENT PLAN.sht Scale=200.0000 ft./in. User=dryer PL1.Drvr\PDF\_Grey\_NQ.ppt Penrib=TEXT\_SUB.tbl 7/30/2010 2:45:03 PM